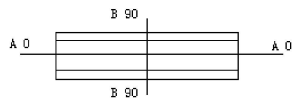
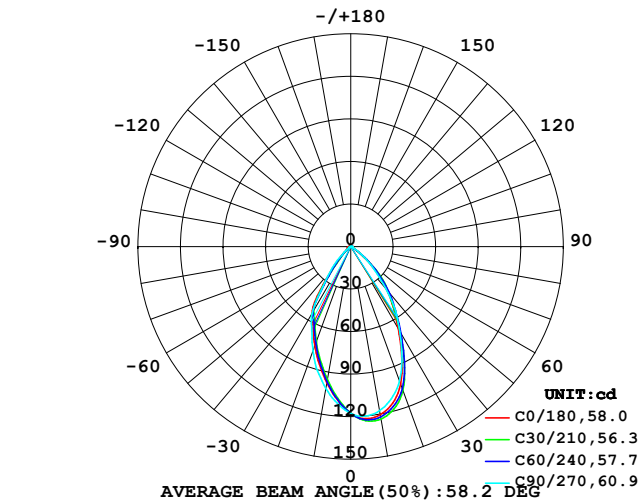


LUMINAIRE PHOTOMETRIC TEST REPORT

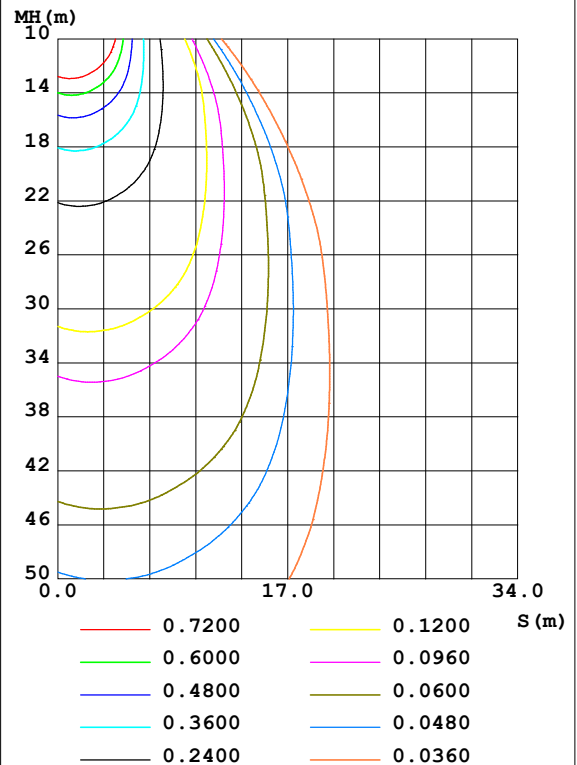
Test:U:24.00V I:0.099A P:2.38W PF:1.000 Freq:0Hz Lamp Flux:122.938x1 lm		
NAME: 62411-2000K	TYPE:	WEIGHT:
SPEC.:	DIM.:	SERIAL No.: 2025062305
MFR.:	SUR.:	Shielding Angle:

DATA OF LAMP		PHOTOMETRIC DATA Eff: 51.74 lm/W			
MODEL		I _{max} (cd)	124.0	S/MH (C0/180)	0.77
NOMINAL POWER (W)		LOR (%)	100.0	S/MH (C90/270)	0.80
RATED VOLTAGE (V)	24	TOTAL FLUX (lm)	122.94	η UP, DN (C0-180)	0.1, 56.7
NOMINAL FLUX (lm)	122.938	CIE CLASS	DIRECT	η UP, DN (C180-360)	0.1, 43.1
LAMPS INSIDE	1	η up (%)	0.2	CIBSE SHR NOM	0.75
TEST VOLTAGE (V)	24	η down (%)	99.8	CIBSE SHR MAX	0.95

LUMINOUS INTENSITY DISTRIBUTION DIAGRAM



C0 PLANE ISOLUX DIAGRAM (UNIT:lx)



C Range: 0 - 360DEG
C Interval: 15.0DEG
Test Speed: HIGH
Temperature: 25DEG
Operators: SENPU
Test Date: 2025-06-21

γ Range: 0 - 100DEG
γ Interval: 1.0DEG
Test System: EVERFINE GO-2000B_V1 SYSTEM V2.00.444
Humidity: 61%
Test Distance: 8.000m [K=1.0000]
Remarks:

ZONAL FLUX DIAGRAM

ZONAL FLUX DIAGRAM:

γ	C0	C45	C90	C135	C180	C225	C270	C315	γ	Φ zone	Φ total	%lum,lamp
10	120.4	123.4	117.5	108.4	97.49	94.64	101.6	109.8	0- 10	10.81	10.81	8.79,8.79
20	103.0	108.6	100.8	89.21	74.35	70.63	78.04	87.65	10- 20	28.04	38.85	31.6,31.6
30	67.25	71.80	69.13	63.44	54.76	52.40	54.76	59.23	20- 30	34.32	73.17	59.5,59.5
40	39.50	42.43	38.41	29.94	19.94	15.89	21.74	27.37	30- 40	27.97	101.1	82.3,82.3
50	14.84	17.19	15.60	10.67	4.962	3.997	4.975	9.185	40- 50	14.44	115.6	94,94
60	1.642	1.662	2.098	1.759	2.519	1.352	1.132	1.186	50- 60	4.296	119.9	97.5,97.5
70	1.151	0.8105	1.029	0.8883	2.329	0.7936	0.6624	0.7847	60- 70	1.262	121.1	98.5,98.5
80	0.9763	0.5316	0.6801	0.4964	2.099	0.4795	0.4532	0.5753	70- 80	0.9539	122.1	99.3,99.3
90	0.5253	0.0958	0.3419	0.2601	0.9140	0.0611	0	0.0262	80- 90	0.5998	122.7	99.8,99.8
100	0.4184	0.0959	0.0784	0.1133	1.107	0.0523	0.0174	0.0261	90-100	0.2326	122.9	100,100
110	0	0	0	0	0	0	0	0	100-110	0.0122	122.9	100,100
120	0	0	0	0	0	0	0	0	110-120	0	122.9	100,100
130	0	0	0	0	0	0	0	0	120-130	0	122.9	100,100
140	0	0	0	0	0	0	0	0	130-140	0	122.9	100,100
150	0	0	0	0	0	0	0	0	140-150	0	122.9	100,100
160	0	0	0	0	0	0	0	0	150-160	0	122.9	100,100
170	0	0	0	0	0	0	0	0	160-170	0	122.9	100,100
180	0	0	0	0	0	0	0	0	170-180	0	122.9	100,100
DEG	LUMINOUS INTENSITY:cd									UNIT:lm		

Conical surface Flux(90deg): 109.88 lm

%lum = 89.4%

%lamp = 89.4%

Conical surface Flux(120deg): 119.88 lm

%lum = 97.5%

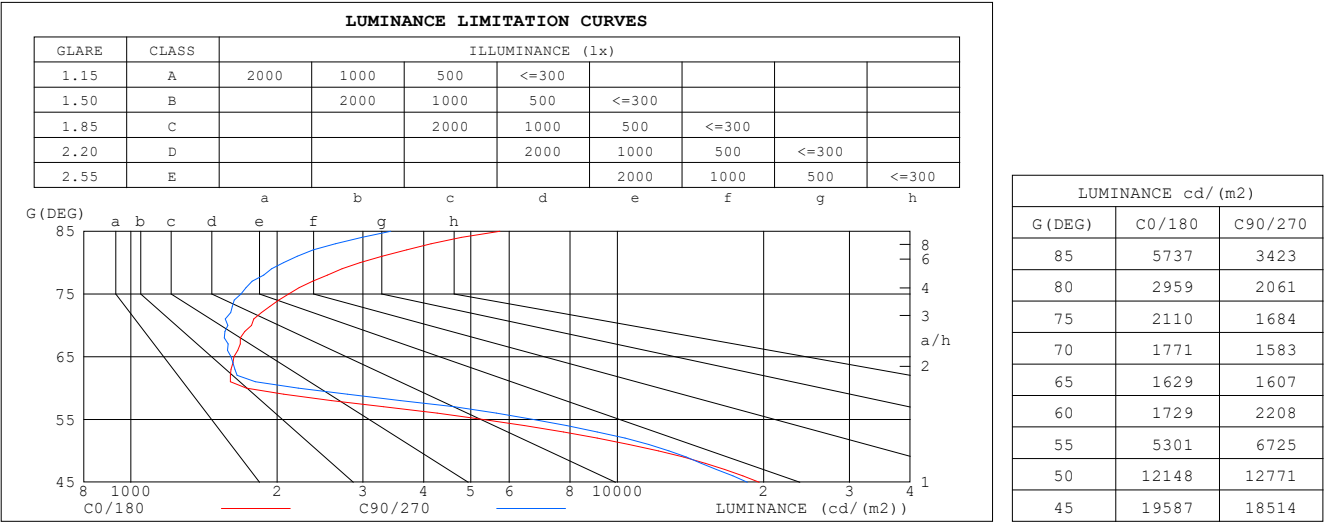
%lamp = 97.5%

C Range: 0 - 360DEG
 C Interval: 15.0DEG
 Test Speed: HIGH
 Temperature:25DEG
 Operators:SENPU
 Test Date:2025-06-21

γ Range: 0 - 100DEG
 γ Interval: 1.0DEG
 Test System:EVERFINE GO-2000B_V1 SYSTEM V2.00.444
 Humidity:61%
 Test Distance:8.000m [K=1.0000]
 Remarks:

LUMINANCE LIMITATION CURVES

Test:U:24.00V I:0.099A P:2.38W PF:1.000 Freq:0Hz Lamp Flux:122.938x1 lm		
NAME: 62411-2000K	TYPE:	WEIGHT:
SPEC.:	DIM.:	SERIAL No.: 2025062305
MFR.:	SUR.:	Shielding Angle:



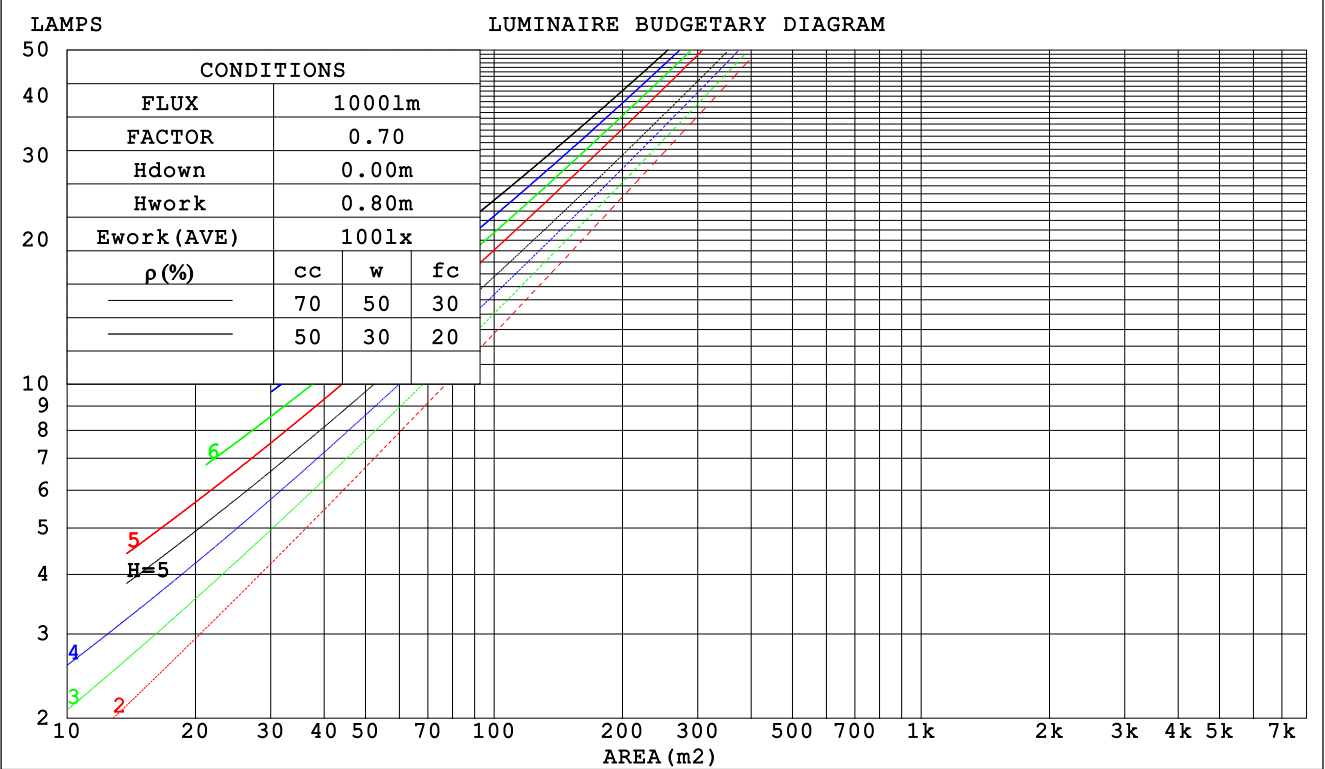
C Range: 0 - 360DEG
C Interval: 15.0DEG
Test Speed: HIGH
Temperature:25DEG
Operators:SENPU
Test Date:2025-06-21

γ Range: 0 - 100DEG
γ Interval: 1.0DEG
Test System:EVERFINE GO-2000B_V1 SYSTEM V2.00.444
Humidity:61%
Test Distance:8.000m [K=1.0000]
Remarks:

CU AND LUMINAIRE BUDGETARY ESTIMATE DIAGRAM

Test:U:24.00V I:0.099A P:2.38W PF:1.000 Freq:0Hz		
Lamp Flux:122.938x1 lm		
NAME: 62411-2000K	TYPE:	WEIGHT:
SPEC.:	DIM.:	SERIAL No.: 2025062305
MFR.:	SUR.:	Shielding Angle:

pcc	80%			70%			50%			30%			10%			0
pw	50%	30%	10%	50%	30%	10%	50%	30%	10%	50%	30%	10%	50%	30%	10%	0
pfc	20%			20%			20%			20%			20%			0
RCR	RCR:Room Cavity Ratio						Coefficients of Utilization(CU)									
0.0	1.19	1.19	1.19	1.16	1.16	1.16	1.11	1.11	1.11	1.06	1.06	1.06	1.02	1.02	1.02	.00
1.0	1.10	1.07	1.04	1.07	1.05	1.03	1.03	1.01	.99	.99	.98	.96	.96	.95	.94	.92
2.0	1.01	.96	.93	.99	.95	.91	.96	.92	.89	.93	.90	.87	.90	.88	.86	.84
3.0	.93	.88	.83	.92	.87	.82	.89	.85	.81	.86	.83	.80	.84	.81	.78	.77
4.0	.86	.80	.75	.85	.79	.75	.83	.78	.74	.81	.76	.73	.79	.75	.72	.70
5.0	.80	.73	.69	.79	.73	.68	.77	.72	.68	.75	.71	.67	.74	.70	.66	.65
6.0	.74	.68	.63	.73	.67	.63	.72	.66	.62	.70	.66	.62	.69	.65	.61	.60
7.0	.69	.63	.58	.69	.62	.58	.67	.62	.58	.66	.61	.57	.65	.60	.57	.55
8.0	.65	.58	.54	.64	.58	.54	.63	.57	.53	.62	.57	.53	.61	.56	.53	.51
9.0	.61	.54	.50	.60	.54	.50	.59	.54	.50	.58	.53	.50	.57	.53	.49	.48
10.0	.57	.51	.47	.57	.51	.47	.56	.50	.46	.55	.50	.46	.54	.50	.46	.45



C Range: 0 - 360DEG
C Interval: 15.0DEG
Test Speed: HIGH
Temperature:25DEG
Operators:SENPU
Test Date:2025-06-21

γ Range: 0 - 100DEG
γ Interval: 1.0DEG
Test System:EVERFINE GO-2000B_V1 SYSTEM V2.00.444
Humidity:61%
Test Distance:8.000m [K=1.0000]
Remarks:

WEC AND CCEC

Test:U:24.00V I:0.099A P:2.38W PF:1.000 Freq:0Hz Lamp Flux:122.938x1 lm		
NAME: 62411-2000K	TYPE:	WEIGHT:
SPEC.:	DIM.:	SERIAL No.: 2025062305
MFR.:	SUR.:	Shielding Angle:

pcc	80%			70%			50%			30%			10%			0	
pw	50%	30%	10%	50%	30%	10%	50%	30%	10%	50%	30%	10%	50%	30%	10%	0	
pfc	20%			20%			20%			20%			20%			0	
RCR	RCR:Room Cavity Ratio						Wall Exitance Coefficients (WEC)										
0.0																	
1.0	.200	.114	.036	.193	.110	.035	.181	.104	.033	.169	.097	.031	.158	.092	.030		
2.0	.191	.105	.032	.186	.102	.031	.175	.097	.030	.165	.092	.029	.155	.088	.028		
3.0	.182	.097	.029	.177	.095	.029	.168	.091	.028	.159	.087	.027	.151	.083	.026		
4.0	.173	.090	.026	.168	.088	.026	.160	.085	.025	.153	.082	.025	.146	.079	.024		
5.0	.164	.084	.024	.160	.082	.024	.153	.080	.023	.146	.077	.023	.140	.075	.023		
6.0	.156	.078	.022	.153	.077	.022	.146	.075	.022	.140	.073	.021	.135	.071	.021		
7.0	.149	.073	.021	.146	.073	.021	.140	.071	.020	.135	.069	.020	.130	.067	.020		
8.0	.142	.069	.019	.139	.068	.019	.134	.067	.019	.129	.065	.019	.125	.064	.019		
9.0	.135	.065	.018	.133	.065	.018	.128	.063	.018	.124	.062	.018	.120	.061	.018		
10.0	.129	.062	.017	.127	.061	.017	.123	.060	.017	.119	.059	.017	.115	.058	.017		

pcc	80%			70%			50%			30%			10%			0
pw	50%	30%	10%	50%	30%	10%	50%	30%	10%	50%	30%	10%	50%	30%	10%	0
pfc	20%			20%			20%			20%			20%			0
RCR	RCR:Room Cavity Ratio						Ceiling Cavity Exitance Coefficients(CCEC)									
0.0	.192	.192	.192	.164	.164	.164	.112	.112	.112	.064	.064	.064	.021	.021	.021	
1.0	.174	.159	.145	.149	.136	.124	.102	.094	.086	.059	.054	.050	.019	.017	.016	
2.0	.160	.134	.112	.137	.115	.097	.094	.080	.067	.054	.046	.039	.017	.015	.013	
3.0	.149	.115	.088	.128	.099	.077	.088	.069	.054	.051	.040	.032	.016	.013	.010	
4.0	.140	.101	.071	.120	.087	.062	.082	.061	.044	.048	.036	.026	.015	.012	.008	
5.0	.131	.090	.059	.113	.077	.051	.078	.054	.036	.045	.032	.021	.015	.010	.007	
6.0	.124	.080	.049	.107	.070	.043	.074	.049	.030	.043	.029	.018	.014	.009	.006	
7.0	.118	.073	.042	.102	.063	.036	.070	.044	.026	.041	.026	.015	.013	.009	.005	
8.0	.112	.067	.036	.097	.058	.031	.067	.041	.022	.039	.024	.013	.013	.008	.004	
9.0	.107	.062	.031	.092	.054	.027	.064	.038	.019	.037	.022	.012	.012	.007	.004	
10.0	.103	.058	.028	.088	.050	.024	.061	.035	.017	.036	.021	.010	.012	.007	.003	

C Range: 0 - 360DEG
C Interval: 15.0DEG
Test Speed: HIGH
Temperature:25DEG
Operators:SENPU
Test Date:2025-06-21

γ Range: 0 - 100DEG
γ Interval: 1.0DEG
Test System:EVERFINE GO-2000B_V1 SYSTEM V2.00.444
Humidity:61%
Test Distance:8.000m [K=1.0000]
Remarks:

UGR(Unified Glare Rating) Table

Test:U:24.00V I:0.099A P:2.38W PF:1.000 Freq:0Hz Lamp Flux:122.938x1 lm										
NAME: 62411-2000K					TYPE:			WEIGHT:		
SPEC.:					DIM.:			SERIAL No.: 2025062305		
MFR.:					SUR.:			Shielding Angle:		
ceiling/cavity	0.7	0.7	0.5	0.5	0.3	0.7	0.7	0.5	0.5	0.3
walls	0.5	0.3	0.5	0.3	0.3	0.5	0.3	0.5	0.3	0.3
working plane	0.2	0.2	0.2	0.2	0.2	0.2	0.2	0.2	0.2	0.2
Room dimensions	Viewed crosswise					Viewed endwise				
x = 2H y = 2H	19.6	20.7	19.9	20.9	21.1	19.7	20.8	20.0	21.0	21.2
3H	19.5	20.5	19.8	20.7	20.9	19.6	20.6	19.9	20.8	21.0
4H	19.5	20.4	19.7	20.6	20.8	19.5	20.5	19.8	20.7	20.9
6H	19.4	20.3	19.7	20.6	20.8	19.5	20.3	19.8	20.6	20.9
8H	19.5	20.3	19.8	20.5	20.8	19.5	20.3	19.8	20.6	20.8
12H	19.5	20.3	19.8	20.6	20.9	19.5	20.3	19.8	20.5	20.8
4H 2H	19.4	20.3	19.7	20.6	20.8	19.5	20.4	19.8	20.7	20.9
3H	19.3	20.1	19.6	20.4	20.7	19.4	20.2	19.7	20.4	20.7
4H	19.3	20.0	19.6	20.3	20.6	19.3	20.0	19.7	20.4	20.7
6H	19.3	19.9	19.7	20.2	20.6	19.3	19.9	19.7	20.3	20.6
8H	19.3	19.9	19.7	20.3	20.6	19.3	19.9	19.7	20.3	20.6
12H	19.4	20.0	19.9	20.4	20.7	19.3	19.9	19.8	20.2	20.6
8H 4H	19.1	19.7	19.5	20.1	20.5	19.2	19.8	19.6	20.2	20.5
6H	19.2	19.7	19.6	20.1	20.5	19.2	19.7	19.6	20.1	20.5
8H	19.3	19.7	19.7	20.1	20.6	19.2	19.7	19.7	20.1	20.5
12H	19.4	19.8	19.9	20.2	20.7	19.3	19.7	19.8	20.1	20.6
12H 4H	19.1	19.6	19.5	20.0	20.4	19.2	19.7	19.6	20.1	20.5
6H	19.2	19.6	19.6	20.0	20.4	19.2	19.6	19.6	20.0	20.5
8H	19.2	19.6	19.7	20.1	20.5	19.2	19.6	19.7	20.0	20.5
Variations with the observer position at spacings(CIE Pub.117):										
S = 1.0H	+ 2.2 / - 5.7					+ 2.2 / - 5.6				
1.5H	+ 2.1 / - 5.0					+ 2.4 / - 4.8				
2.0H	+ 5.2 / - 5.8					+ 4.7 / - 6.6				

CIE Pub.117, 122.9 lm Total Lamp Luminous Flux Corrected ($8\log(F/F_0) = -7.3$)
Area: 0.0019 m²

C Range: 0 - 360DEG
C Interval: 15.0DEG
Test Speed: HIGH
Temperature:25DEG
Operators:SENPU
Test Date:2025-06-21

γ Range: 0 - 100DEG
 γ Interval: 1.0DEG
Test System:EVERFINE GO-2000B_V1 SYSTEM V2.00.444
Humidity:61%
Test Distance:8.000m [K=1.0000]
Remarks:

UTILIZATION FACTORS TABLE

Test:U:24.00V I:0.099A P:2.38W PF:1.000 Freq:0Hz Lamp Flux:122.938x1 lm		
NAME: 62411-2000K	TYPE:	WEIGHT:
SPEC.:	DIM.:	SERIAL No.: 2025062305
MFR.:	SUR.:	Shielding Angle:

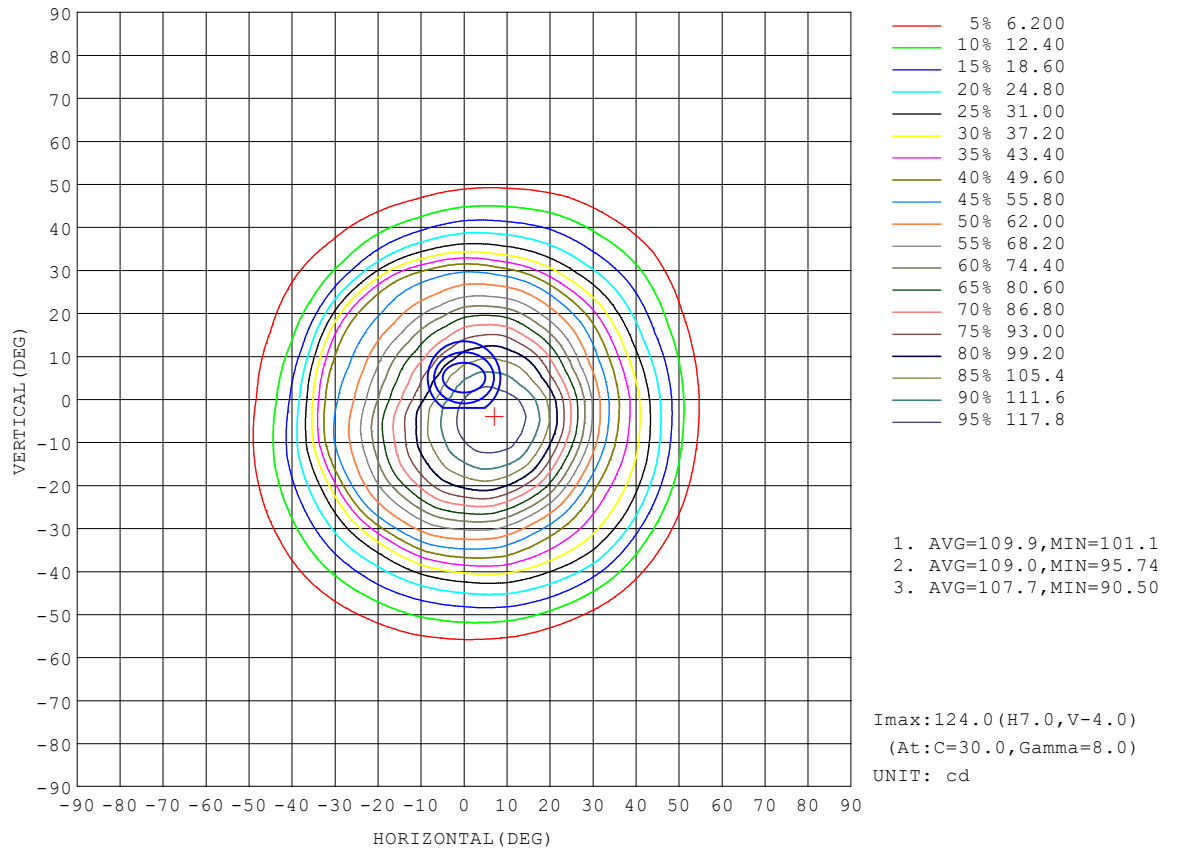
REFLECTANCE										
Ceiling	0.8	0.8	0.8	0.7	0.7	0.7	0.5	0.5	0.5	0
Walls	0.7	0.5	0.3	0.7	0.5	0.3	0.7	0.5	0.3	0
Working plane	0.2	0.2	0.2	0.2	0.2	0.2	0.2	0.2	0.2	0
ROOM INDEX	UTILIZATION FACTORS (PERCENT) $k(RI) \times RCR = 5$									
$k = 0.60$	80	73	68	80	73	68	79	72	68	64
0.80	89	82	77	88	81	77	87	81	77	72
1.00	95	88	83	94	87	83	92	88	83	78
1.25	99	93	89	98	93	89	96	91	88	83
1.50	103	97	93	101	96	92	99	95	91	86
2.00	106	101	97	105	100	97	102	98	95	90
2.50	108	104	100	106	102	99	103	100	97	91
3.00	110	106	103	108	105	102	105	102	99	93
4.00	112	109	106	110	107	105	106	104	102	95
5.00	114	111	109	111	109	107	107	105	104	96
ROOM INDEX	UF (total)									Direct
According to DIN EN 13032-2 2004			Suspended					SHRNOM = 1.25		

C Range: 0 - 360DEG
 C Interval: 15.0DEG
 Test Speed: HIGH
 Temperature: 25DEG
 Operators: SENPU
 Test Date: 2025-06-21

γ Range: 0 - 100DEG
 γ Interval: 1.0DEG
 Test System: EVERFINE GO-2000B_V1 SYSTEM V2.00.444
 Humidity: 61%
 Test Distance: 8.000m [K=1.0000]
 Remarks:

ISOCANDELA DIAGRAM

Test:U:24.00V I:0.099A P:2.38W PF:1.000 Freq:0Hz Lamp Flux:122.938x1 lm		
NAME: 62411-2000K	TYPE:	WEIGHT:
SPEC.:	DIM.:	SERIAL No.: 2025062305
MFR.:	SUR.:	Shielding Angle:

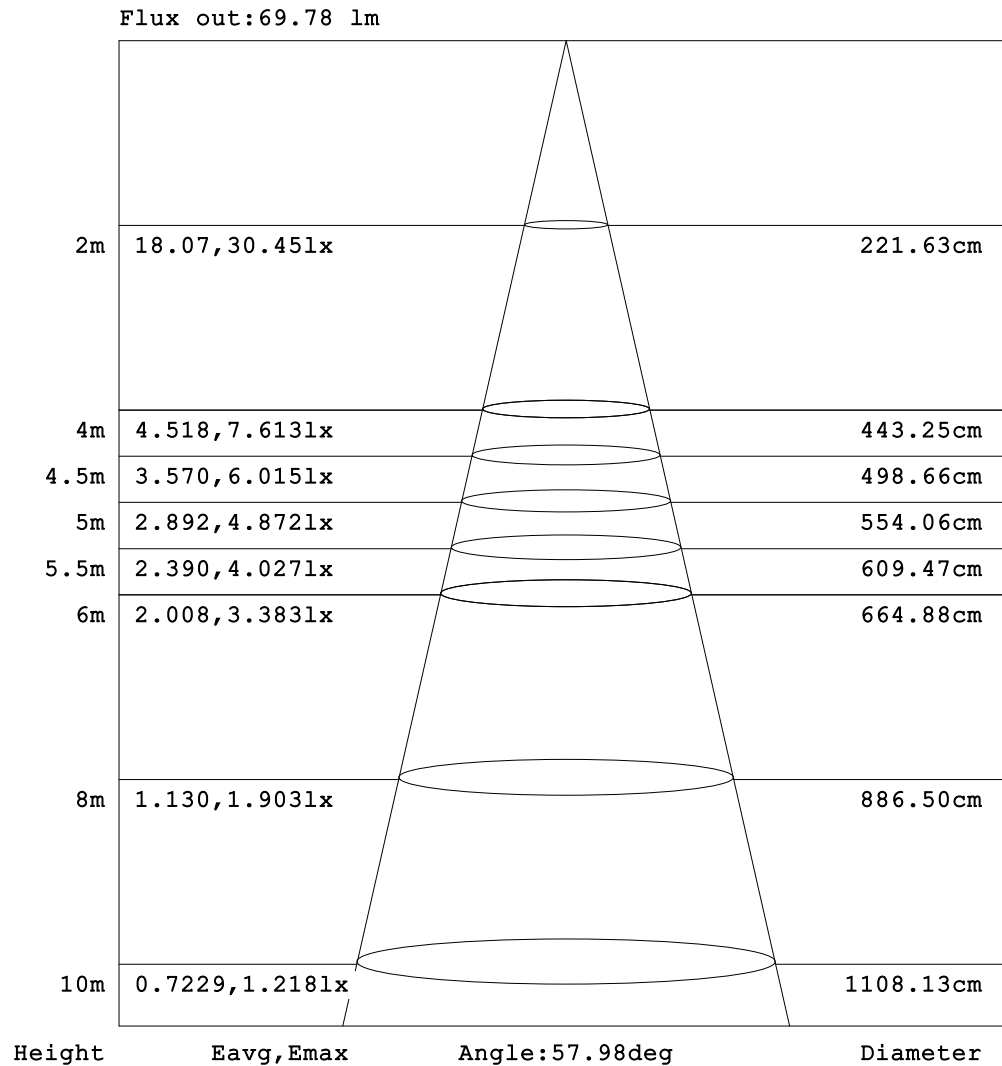


C Range: 0 - 360DEG
C Interval: 15.0DEG
Test Speed: HIGH
Temperature: 25DEG
Operators: SENPU
Test Date: 2025-06-21

γ Range: 0 - 100DEG
 γ Interval: 1.0DEG
Test System: EVERFINE GO-2000B_V1 SYSTEM V2.00.444
Humidity: 61%
Test Distance: 8.000m [K=1.0000]
Remarks:

AAI Figure

Test:U:24.00V I:0.099A P:2.38W PF:1.000 Freq:0Hz Lamp Flux:122.938x1 lm		
NAME: 62411-2000K	TYPE:	WEIGHT:
SPEC.:	DIM.:	SERIAL No.: 2025062305
MFR.:	SUR.:	Shielding Angle:



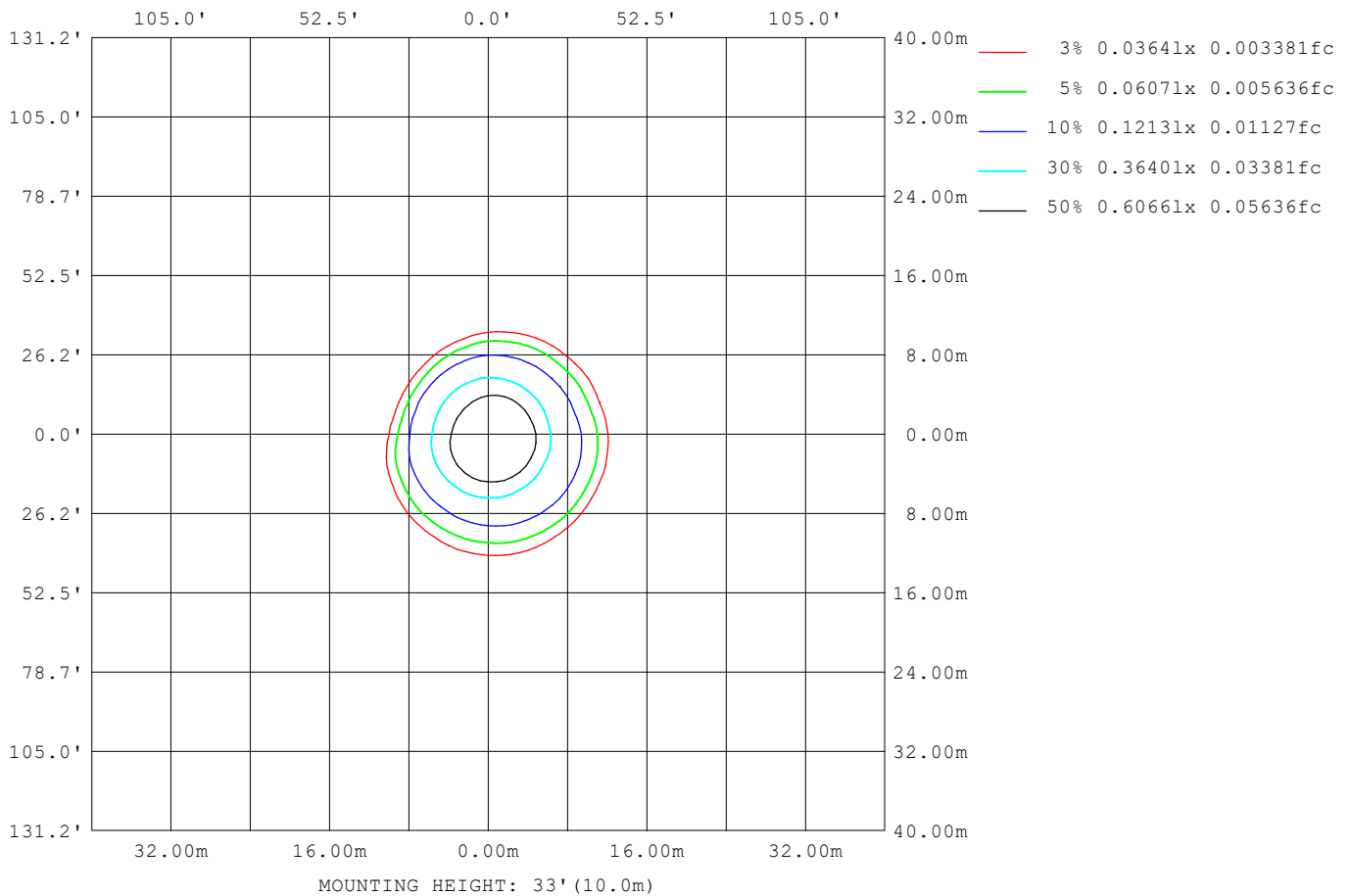
Note:The Curves indicate the illuminated area and the average illumination when the luminaire is at different distance.

C Range: 0 - 360DEG
C Interval: 15.0DEG
Test Speed: HIGH
Temperature:25DEG
Operators:SENPU
Test Date:2025-06-21

γ Range: 0 - 100DEG
γ Interval: 1.0DEG
Test System:EVERFINE GO-2000B_V1 SYSTEM V2.00.444
Humidity:61%
Test Distance:8.000m [K=1.0000]
Remarks:

ISOLUX DIAGRAM

Test:U:24.00V I:0.099A P:2.38W PF:1.000 Freq:0Hz Lamp Flux:122.938x1 lm		
NAME: 62411-2000K	TYPE:	WEIGHT:
SPEC.:	DIM.:	SERIAL No.: 2025062305
MFR.:	SUR.:	Shielding Angle:



C Range: 0 - 360DEG
C Interval: 15.0DEG
Test Speed: HIGH
Temperature: 25DEG
Operators: SENPU
Test Date: 2025-06-21

γ Range: 0 - 100DEG
 γ Interval: 1.0DEG
 γ Test System: EVERFINE GO-2000B_V1 SYSTEM V2.00.444
Humidity: 61%
Test Distance: 8.000m [K=1.0000]
Remarks:

LED Avg.L Report

Test:U:24.00V I:0.099A P:2.38W PF:1.000 Freq:0Hz Lamp Flux:122.938x1 lm		
NAME: 62411-2000K	TYPE:	WEIGHT:
SPEC.:	DIM.:	SERIAL No.: 2025062305
MFR.:	SUR.:	Shielding Angle:

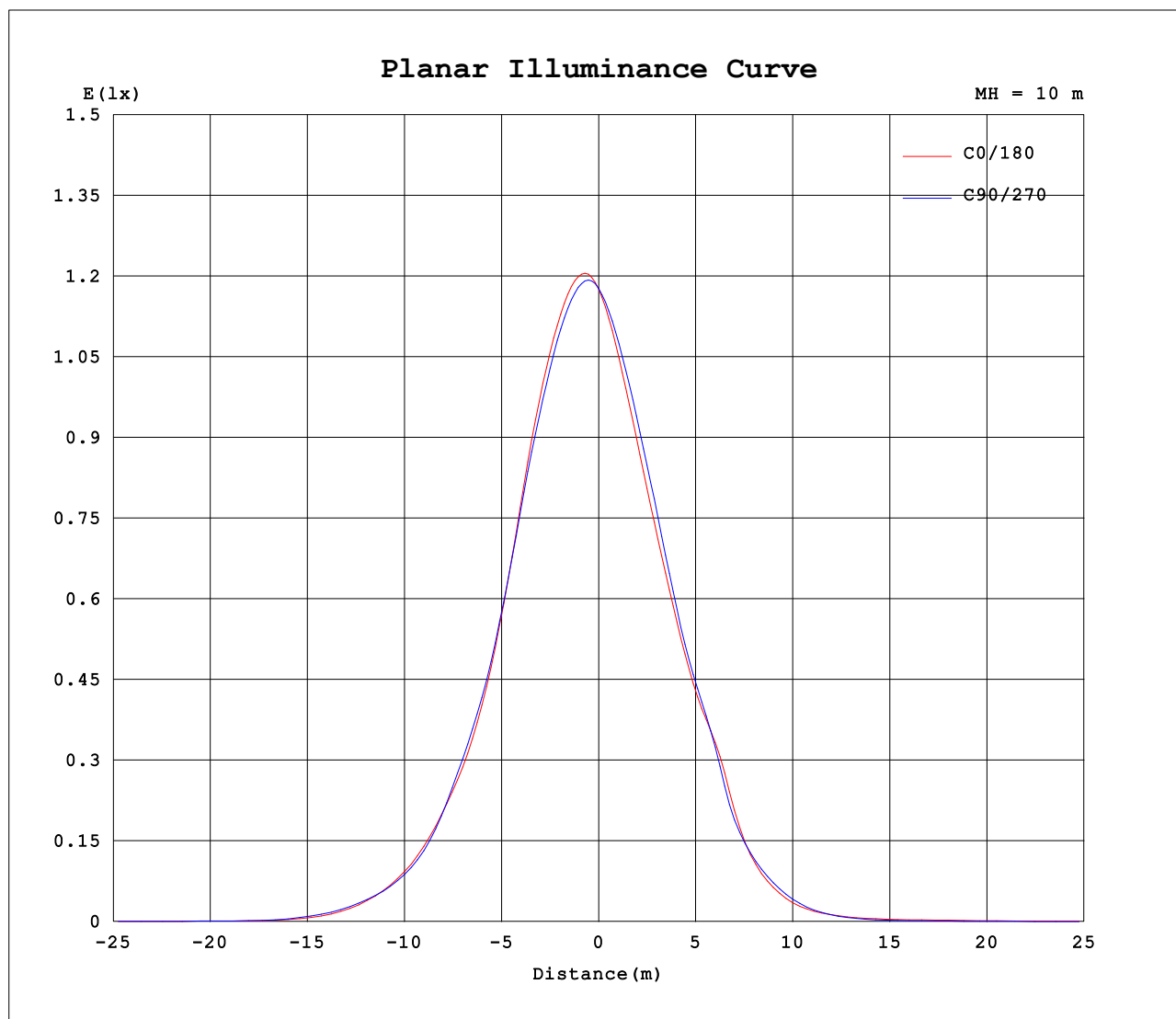
AvgL	cd/m2
L_0~180 (65) av	2095
L_0~180 (75) av	3642
L_0~180 (85) av	7341
L_90~270 (65) av	1325
L_90~270 (75) av	1392
L_90~270 (85) av	3001
L_45 (65) av	1305
L_45 (75) av	1316
L_45 (85) av	2802

Standard: GB/T 29293-2012

C Range: 0 - 360DEG
C Interval: 15.0DEG
Test Speed: HIGH
Temperature:25DEG
Operators:SENPU
Test Date:2025-06-21

γ Range: 0 - 100DEG
γ Interval: 1.0DEG
Test System:EVERFINE GO-2000B_V1 SYSTEM V2.00.444
Humidity:61%
Test Distance:8.000m [K=1.0000]
Remarks:

Planar Illuminance Curve



C Range: 0 - 360DEG
C Interval: 15.0DEG
Test Speed: HIGH
Temperature: 25DEG
Operators: SENPU
Test Date: 2025-06-21

γ Range: 0 - 100DEG
 γ Interval: 1.0DEG
Test System: EVERFINE GO-2000B_V1 SYSTEM V2.00.444
Humidity: 61%
Test Distance: 8.000m [K=1.0000]
Remarks:

LUMINOUS DISTRIBUTION INTENSITY DATA

Test:U:24.00V I:0.099A P:2.38W PF:1.000 Freq:0Hz Lamp Flux:122.938x1 lm		
NAME: 62411-2000K	TYPE:	WEIGHT:
SPEC.:	DIM.:	SERIAL No.: 2025062305
MFR.:	SUR.:	Shielding Angle:

Table--1

UNIT: cd

C (DEG) γ (DEG)	0	15	30	45	60	75	90	105	120	135	150	165	180	195	210	225	240	255	270
0	118	117	117	117	118	117	118	118	118	118	118	118	118	117	117	117	118	117	118
5	122	123	123	123	123	121	120	118	116	115	113	112	109	107	107	107	108	109	111
10	120	123	124	123	122	120	117	115	111	108	105	102	97.5	95.0	95.0	94.6	96.7	98.1	102
15	114	118	119	119	117	115	111	108	103	99.7	94.7	91.1	85.9	83.3	83.0	82.5	84.5	86.6	90.7
20	103	107	108	109	107	105	101	97.8	93.3	89.2	84.0	79.8	74.4	71.6	71.2	70.6	72.2	73.9	78.0
25	85.4	89.0	89.6	91.2	89.7	88.8	85.5	83.8	79.5	76.4	71.6	68.2	63.1	60.6	60.1	59.7	61.2	62.5	65.4
30	67.3	69.7	70.1	71.8	71.1	71.4	69.1	68.3	65.4	63.4	60.5	58.4	54.8	52.9	52.5	52.4	53.3	53.3	54.8
35	52.3	53.6	53.3	55.1	55.2	56.5	55.2	54.3	50.4	48.4	44.5	43.5	37.7	35.5	35.1	33.3	33.3	32.8	34.5
40	39.5	41.3	41.2	42.4	42.3	41.8	38.4	35.9	31.9	29.9	27.4	25.4	19.9	16.7	15.7	15.9	17.8	19.3	21.7
45	26.3	29.5	30.5	30.5	28.6	27.3	24.9	23.1	21.0	19.4	16.8	14.3	9.97	8.13	7.90	7.64	8.46	9.55	11.9
50	14.8	16.2	16.3	17.2	17.0	16.8	15.6	14.4	12.3	10.7	8.49	6.75	4.96	4.41	4.35	4.00	3.99	4.02	4.98
55	5.78	6.09	6.12	6.63	6.92	7.66	7.33	6.71	5.36	4.47	3.97	3.52	2.92	2.53	2.38	2.15	2.05	1.96	1.99
60	1.64	1.66	1.67	1.66	1.78	2.07	2.10	2.10	1.89	1.76	2.80	2.77	2.52	1.84	1.52	1.35	1.23	1.26	1.13
65	1.31	1.19	1.14	1.02	1.15	1.18	1.29	1.20	1.25	1.19	1.81	2.20	2.06	1.76	1.24	1.03	0.91	0.96	0.84
70	1.15	0.96	0.89	0.81	0.92	0.89	1.03	0.94	0.96	0.89	1.09	2.41	2.33	2.22	0.81	0.79	0.65	0.74	0.66
75	1.04	0.84	0.72	0.67	0.75	0.71	0.83	0.75	0.78	0.64	0.72	2.69	2.54	2.49	0.64	0.61	0.52	0.59	0.54
80	0.98	0.58	0.60	0.53	0.61	0.55	0.68	0.64	0.62	0.50	0.53	1.10	2.10	0.69	0.43	0.48	0.38	0.50	0.45
85	0.95	0.59	0.54	0.51	0.53	0.44	0.57	0.54	0.51	0.39	0.43	0.46	1.48	0.63	0.33	0.40	0.30	0.45	0.43
90	0.53	0.45	0.13	0.10	0.15	0.23	0.34	0.41	0.34	0.26	0.27	1.37	0.91	0.93	0.09	0.06	0.01	0.03	0.00
95	0.51	0.42	0.08	0.10	0.10	0.10	0.08	0.08	0.09	0.11	0.14	1.02	0.81	0.57	0.09	0.05	0.01	0.03	0.00
100	0.42	0.40	0.11	0.10	0.10	0.10	0.08	0.08	0.10	0.11	0.14	1.32	1.11	0.64	0.10	0.05	0.03	0.02	0.02
105	0.00	0.00	0.00	0.00	0.00	0.00	0.00	0.00	0.00	0.00	0.00	0.00	0.00	0.00	0.00	0.00	0.00	0.00	0.00
110	0.00	0.00	0.00	0.00	0.00	0.00	0.00	0.00	0.00	0.00	0.00	0.00	0.00	0.00	0.00	0.00	0.00	0.00	0.00
115	0.00	0.00	0.00	0.00	0.00	0.00	0.00	0.00	0.00	0.00	0.00	0.00	0.00	0.00	0.00	0.00	0.00	0.00	0.00
120	0.00	0.00	0.00	0.00	0.00	0.00	0.00	0.00	0.00	0.00	0.00	0.00	0.00	0.00	0.00	0.00	0.00	0.00	0.00
125	0.00	0.00	0.00	0.00	0.00	0.00	0.00	0.00	0.00	0.00	0.00	0.00	0.00	0.00	0.00	0.00	0.00	0.00	0.00
130	0.00	0.00	0.00	0.00	0.00	0.00	0.00	0.00	0.00	0.00	0.00	0.00	0.00	0.00	0.00	0.00	0.00	0.00	0.00
135	0.00	0.00	0.00	0.00	0.00	0.00	0.00	0.00	0.00	0.00	0.00	0.00	0.00	0.00	0.00	0.00	0.00	0.00	0.00
140	0.00	0.00	0.00	0.00	0.00	0.00	0.00	0.00	0.00	0.00	0.00	0.00	0.00	0.00	0.00	0.00	0.00	0.00	0.00
145	0.00	0.00	0.00	0.00	0.00	0.00	0.00	0.00	0.00	0.00	0.00	0.00	0.00	0.00	0.00	0.00	0.00	0.00	0.00
150	0.00	0.00	0.00	0.00	0.00	0.00	0.00	0.00	0.00	0.00	0.00	0.00	0.00	0.00	0.00	0.00	0.00	0.00	0.00
155	0.00	0.00	0.00	0.00	0.00	0.00	0.00	0.00	0.00	0.00	0.00	0.00	0.00	0.00	0.00	0.00	0.00	0.00	0.00
160	0.00	0.00	0.00	0.00	0.00	0.00	0.00	0.00	0.00	0.00	0.00	0.00	0.00	0.00	0.00	0.00	0.00	0.00	0.00
165	0.00	0.00	0.00	0.00	0.00	0.00	0.00	0.00	0.00	0.00	0.00	0.00	0.00	0.00	0.00	0.00	0.00	0.00	0.00
170	0.00	0.00	0.00	0.00	0.00	0.00	0.00	0.00	0.00	0.00	0.00	0.00	0.00	0.00	0.00	0.00	0.00	0.00	0.00
175	0.00	0.00	0.00	0.00	0.00	0.00	0.00	0.00	0.00	0.00	0.00	0.00	0.00	0.00	0.00	0.00	0.00	0.00	0.00
180	0.00	0.00	0.00	0.00	0.00	0.00	0.00	0.00	0.00	0.00	0.00	0.00	0.00	0.00	0.00	0.00	0.00	0.00	0.00

C Range: 0 - 360DEG
C Interval: 15.0DEG
Test Speed: HIGH
Temperature:25DEG
Operators:SENPU
Test Date:2025-06-21

γ Range: 0 - 100DEG
γ Interval: 1.0DEG
Test System:EVERFINE GO-2000B_V1 SYSTEM V2.00.444
Humidity:61%
Test Distance:8.000m [K=1.0000]
Remarks:

LUMINOUS DISTRIBUTION INTENSITY DATA

Test:U:24.00V I:0.099A P:2.38W PF:1.000 Freq:0Hz Lamp Flux:122.938x1 lm		
NAME: 62411-2000K	TYPE:	WEIGHT:
SPEC.:	DIM.:	SERIAL No.: 2025062305
MFR.:	SUR.:	Shielding Angle:

Table--2

UNIT: cd

C (DEG) γ (DEG)	285	300	315	330	345														
0	118	118	118	118	118														
5	112	114	116	118	120														
10	104	107	110	113	116														
15	93.7	97.7	101	105	108														
20	80.9	85.1	87.7	92.3	95.4														
25	67.3	70.3	72.3	75.8	78.4														
30	55.3	57.8	59.2	61.4	62.5														
35	35.7	39.2	42.5	47.2	49.3														
40	23.1	25.4	27.4	31.2	34.0														
45	13.6	16.0	17.3	19.8	21.6														
50	6.11	7.92	9.18	11.3	12.1														
55	2.20	2.86	3.30	4.45	4.47														
60	1.21	1.15	1.19	1.23	1.48														
65	0.95	0.91	0.95	0.91	1.28														
70	0.78	0.71	0.78	0.67	1.15														
75	0.65	0.65	0.67	0.55	0.89														
80	0.59	0.57	0.58	0.50	0.56														
85	0.58	0.56	0.56	0.44	0.64														
90	0.03	0.00	0.03	0.00	0.47														
95	0.02	0.00	0.03	0.00	0.46														
100	0.02	0.02	0.03	0.00	0.32														
105	0.00	0.00	0.00	0.00	0.00														
110	0.00	0.00	0.00	0.00	0.00														
115	0.00	0.00	0.00	0.00	0.00														
120	0.00	0.00	0.00	0.00	0.00														
125	0.00	0.00	0.00	0.00	0.00														
130	0.00	0.00	0.00	0.00	0.00														
135	0.00	0.00	0.00	0.00	0.00														
140	0.00	0.00	0.00	0.00	0.00														
145	0.00	0.00	0.00	0.00	0.00														
150	0.00	0.00	0.00	0.00	0.00														
155	0.00	0.00	0.00	0.00	0.00														
160	0.00	0.00	0.00	0.00	0.00														
165	0.00	0.00	0.00	0.00	0.00														
170	0.00	0.00	0.00	0.00	0.00														
175	0.00	0.00	0.00	0.00	0.00														
180	0.00	0.00	0.00	0.00	0.00														

C Range: 0 - 360DEG
 C Interval: 15.0DEG
 Test Speed: HIGH
 Temperature:25DEG
 Operators:SENPU
 Test Date:2025-06-21

γ Range: 0 - 100DEG
 γ Interval: 1.0DEG
 Test System:EVERFINE GO-2000B_V1 SYSTEM V2.00.444
 Humidity:61%
 Test Distance:8.000m [K=1.0000]
 Remarks: